

# LIMIT SWITCHES



LIMIT SWITCHES



CONTROL GEAR EQUIPMENT FOR EOT CRANES

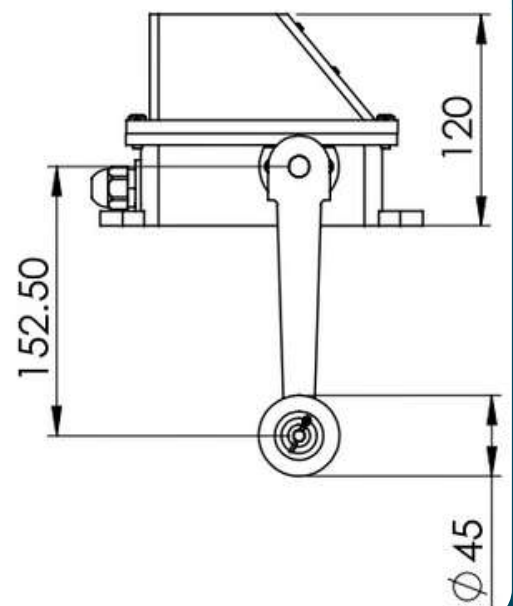
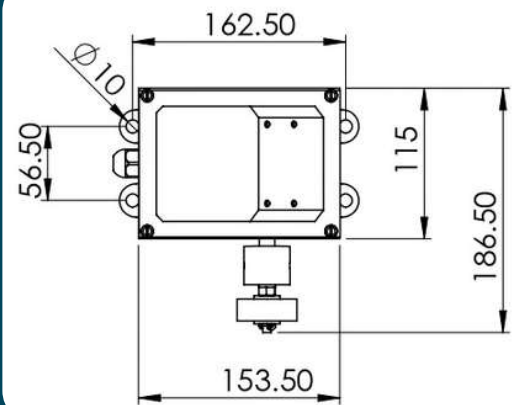
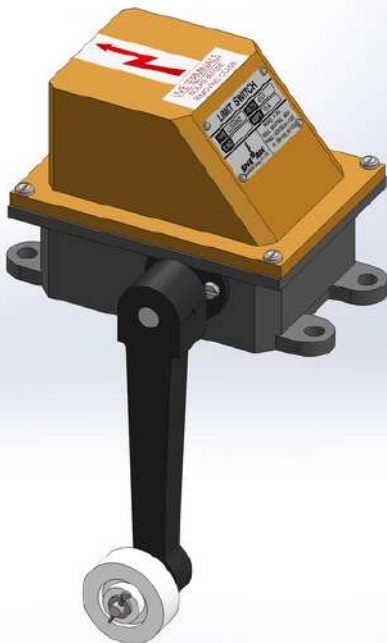
[speedageengineers.com](http://speedageengineers.com)



## Lever Limit Switch

Speedage make Lever Limit Switches are used for heavy duty EOT Cranes, Wagon shunting devices etc to prevent over travel. The Limit Switch normally remains closed and cuts off power to stop the motor of the crane. The lever limit switch operates when it reaches a predetermined position when the lever is moved over a projecting member fixed on the girder. The Limit Switches are made in IP54 enclosure. The housing is made of cast aluminium. The base and cover have machined surface to protect against dirt and dust.

Lever Limit Switch

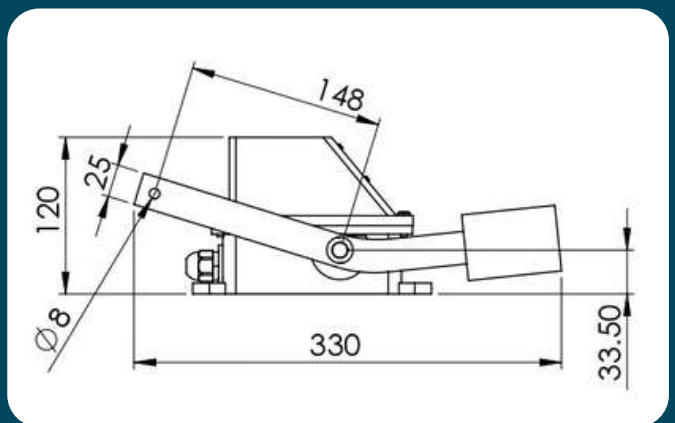
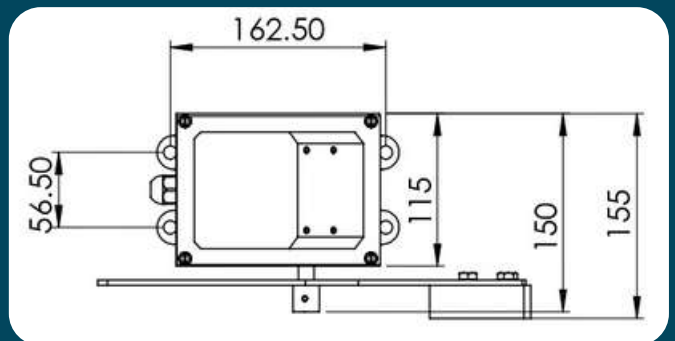




## Counter Weight Limit Switch

Speedage make Counter Weight Limit Switches are used for heavy duty EOT Cranes, Hoists, to prevent over travel of hoisting motion on power and control circuit up to 500 V AC, 50 Hz and 40 Amps continuous current. The housing of gravity Limit Switch is made of cast iron / cast aluminium (IP54).

### Counter Weight Limit Switch



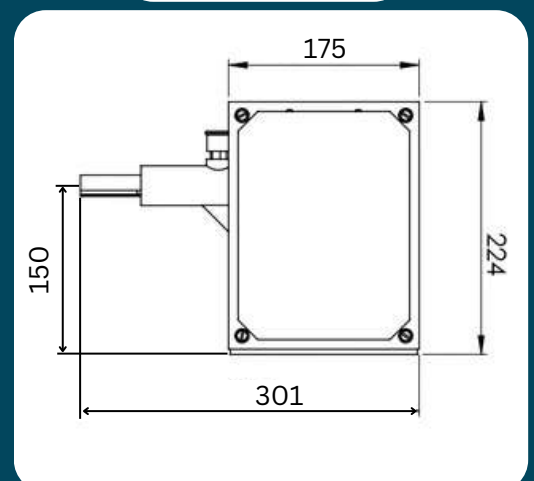
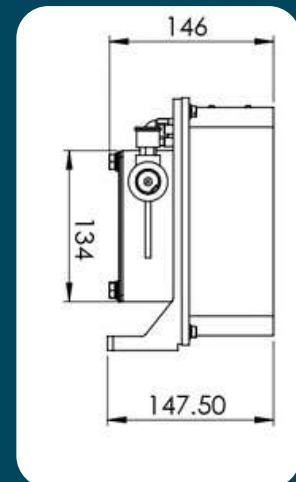


## Rotary Geared Limit Switch

Speedage make Rotary Geared Limit Switches are used on control of power circuit of reversing drives so as to limit their rotation/movement within a predetermined position. The function of the Limit Switch is to stop the mechanism or drive at the extreme forward/reverse position. The Geared Rotary Limit Switch basically consists of heavy duty worm gear drive with a ratio of 48:1 or 60:1. The worm gear unit is built in a sturdy cast aluminium housing which is fitted on the main body of the Limit Switch, covered with dust tight gasket in cast aluminium enclosure. There are two models of Rotary Geared Limit Switches that we provide, Geared Rotary Limit Switch (GRLS) and FG Limit Switches.

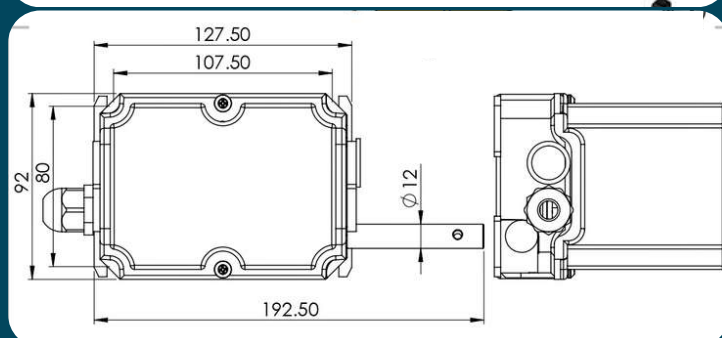
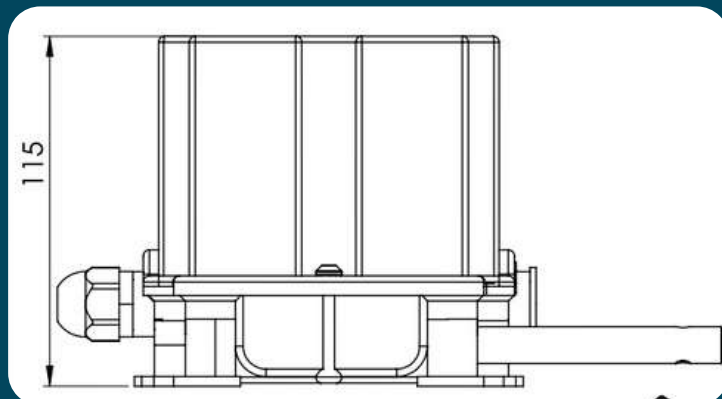
Rotary Geared Limit Switches are available in different Gear ratio like 48:1 and 60:1 Gear Ratios. We may also provide a customized Ratio based on the needs of the customer.

### ROTARY GEARED LIMIT SWITCHES





## Geared Rotary Limit Switch FG Model



### ROTATING GEAR LIMIT SWITCH (MODEL- FG)

**FG type Limit Switch Specifications and model Numbers:**

Rotation Ration	Effective Rotation	Useful Rotation	2 Contacts Model No.	4 Contacts Model No.
12.5:1	12	11	FG/12.5P2	FG/12.5P4
50:1	49	46	FG/50P2	FG/50P4
100:1	98	93	FG/100P2	FG/100P4
200:1	196	185	FG/200P2	FG/200P4
400:1	392	372	FG/400P2	FG/400P4



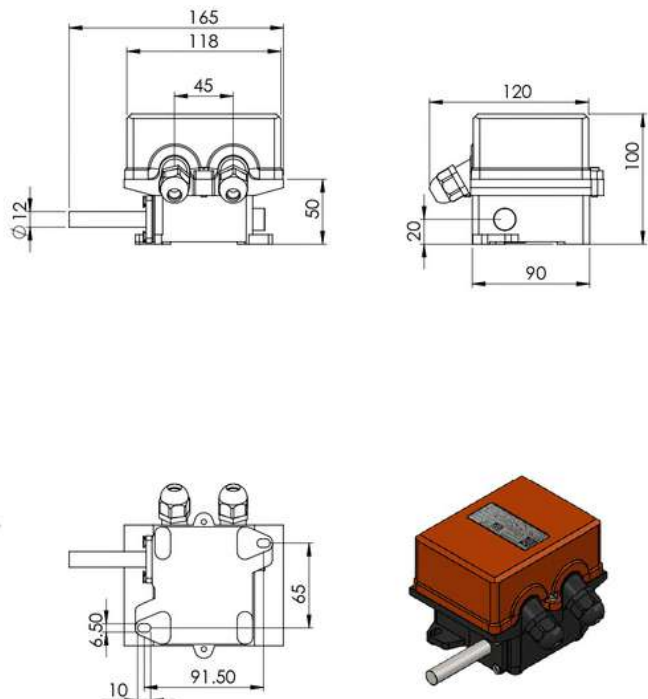


## Worm Drive Limit Switch

The new range of Limit Switch has been designed and manufactured for use on reversing drives such as hoists, winches rolling mills etc. It is compact in design and can be easily accommodate and installed on electric hoists, where space constrains are there. These Limit Switches come with worm gear drive ratio of 1:100; specific worm gear drive ratio can also be supplied on request as per the customer's requirement.

These Limit switches are supplied with IP65 degree of protection. The Contacts of limit switches are 10 amps rated for 500 V AC installed on electric hoists, where space constrains are there. \*This range of Limit Switch is suitable for reversing drives, such as Hoist, Cranes, Winches, Rolling mills etc. **MECHANICAL FEATURES OF LIMIT SWITCH** • Aluminium die casted main body and thermoplastic cover • Maximum number of operating contacts-6 • Cable entries 2 Nos. • Operating Temperature -10°C to +70°C • Cams & adjustments Screw, allows precise setting of cams as per requirements • Cams shaft and worm gear with ball bearing **ELECTRICAL FEATURES OF CONTACT ELEMENTS** • Snap action Contacts - 1 NO + 1 NC Change over switches • Silver Cadmium Contacts • Test Voltage - 2000 V • Operating Current - 10 A rated at 415 V AC • Mechanical Life - 1 X 10 to the power 6 Operations.

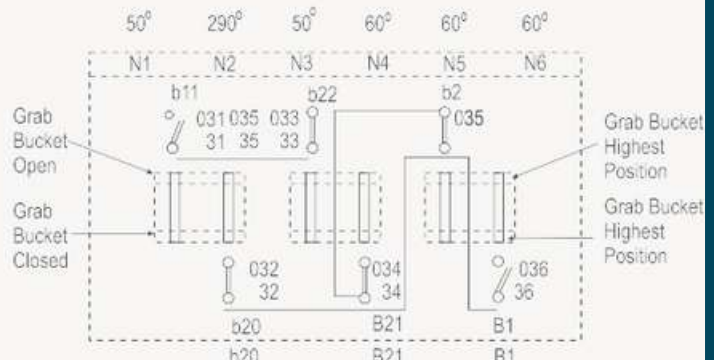
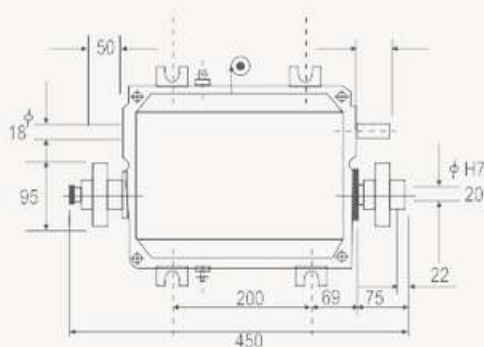
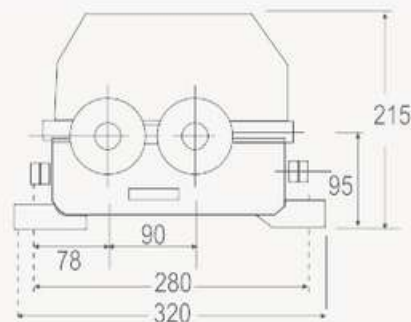
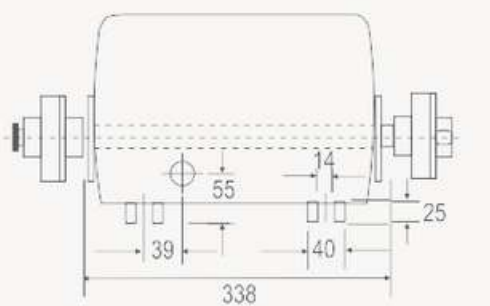
### Worm Drive LIMIT SWITCH





## Grab Differential Limit Switch

The Grab Differential Limit Switch is driven by holding and closing winches is used in auxiliary circuit for single lever grab control. It is used for stopping the closing motor after closing or opening regardless of the height of the grab and starting the holding motor after closing for transition to the hoisting action as well as for stopping the holding and closing motors at the highest and lowest grab positions.





## Safety is Priceless

Safety is priceless. We produce high quality original Equipment for EOT cranes to assure safety. When we use high quality equipment in our EOT cranes, we actually save human and financial resources by eliminating the unnecessary maintenance, time and cost. It reduces the machine downtime and enhances overall production of the plant. Speedage Engineers high quality equipment for EOT cranes offers fail-safe original equipment for EOT cranes with better durability and reliability.

## Speedage Engineers India

More than 25 years, Speedage Engineers (India) Pvt. Ltd., has been one of the innovative and leading original equipment manufacturer of control gear equipment for EOT cranes. The product development and manufacturing philosophy of Speedage Engineers is based on "Safety is priceless".

We ensure to deliver high quality and safe product to our customers. Speedage maintains product quality leadership by constantly innovating and improving the products in response to customer requirements.

Our customer centric approach allowed us to serve our clients with high quality and full satisfaction.

## Product Applications for various industries

EOT Cranes; Steel, Sugar, Fertilizers, Cement, Power, Heavy Engineering, Automobile Industries, Ports, and many other industries where Heavy material handling required.

## Product Range

ELOPHY Thrusters, ELOPHY Brakes, Thrusters, Thruster Brakes, Master Controller, Resistance Boxes, Limit Switches, Cable Trolleys, Pendant Push Button stations, Rotating Geared Limit Switch, Radio Remote, Controls, Anti Collision Devices, Geared Couplings, Brake Drum Couplings.

**Speedage Engineers (India) Pvt. Ltd.**

C-94 DDA Sheds, Okhla Industrial Area, Phase-I, New Delhi-110020

Phone: 88 261 523 17, 011-41707718, 417077702/03 Email: dprasad.speedageengineers@gmail.com

**speedageengineers.com**